

Math Worksheet: Graphs of Functions (4)

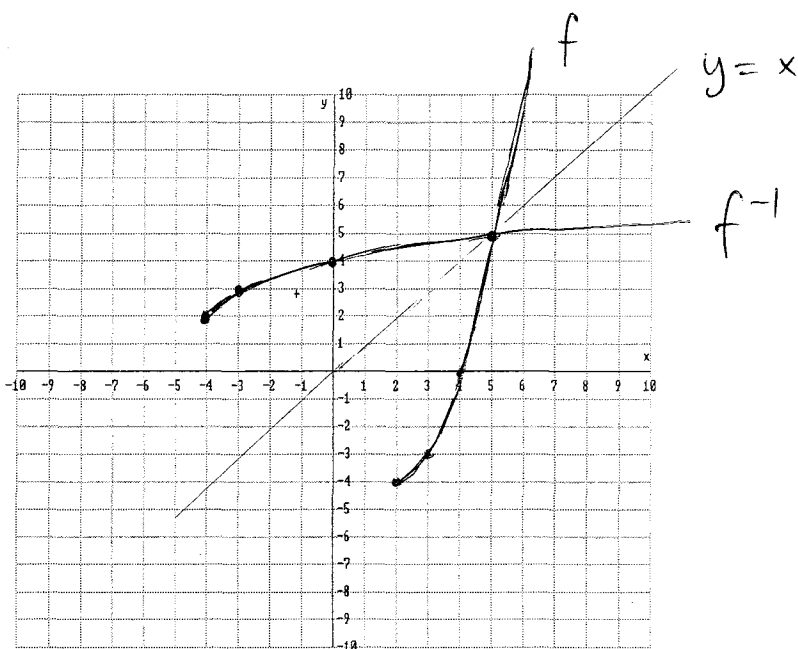
1. Graph function f given by

$$f(x) = x^2 - 4x, \text{ for } x \geq 2$$

$$f(x) = (x-2)^2 - 4$$

$$\text{Vertex } (2, -4)$$

x	f(x)
2	-4
3	-3
4	0
5	5



2. Find the inverse of function f , including its domain and range.

$$f^{-1}(x) = 2 + \sqrt{x+4}, \text{ Domain: } [-4, +\infty),$$

$$\text{Range: } [2, +\infty)$$

3. Graph the inverse of function f in the same system of axes as the graph of f and compare the two graphs.

use above
table to
get

x	f ⁻¹ (x)
-4	2
-3	3
0	4
5	5

The two graphs
are reflections
on $y = x$.