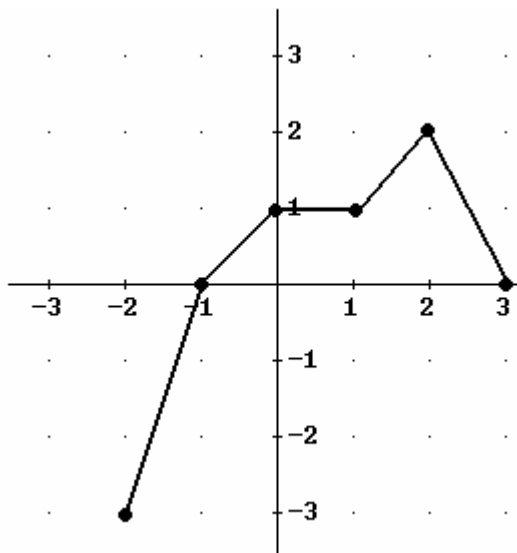


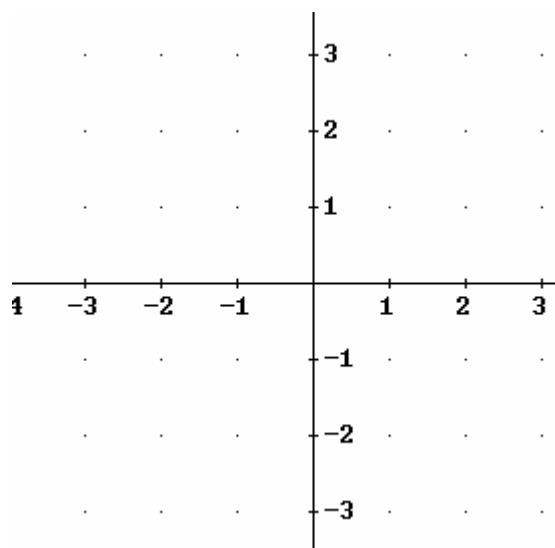
Free calculus worksheets from www.anlyzemath.com

Calculus Worksheet: Limits of Functions (1)

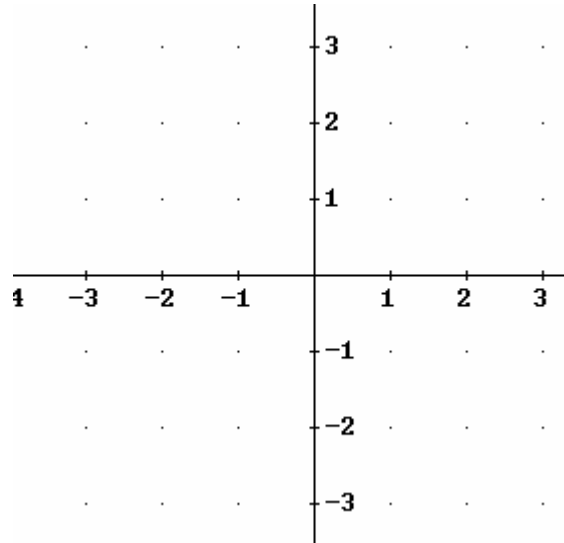
The graph of function f defined on the interval $[-2, 3]$ is shown below.



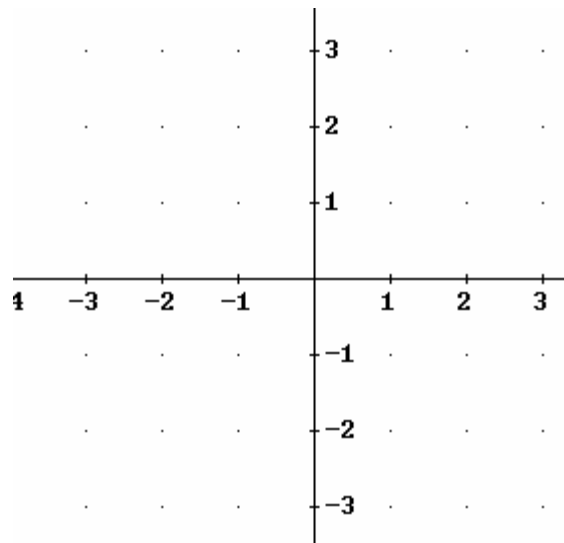
1. Sketch the graph of $y = |f(x)|$ and find its domain and range.



2. Sketch the graph of $y = f(|x|)$ and find its domain and range.



3. Sketch the graph of $y = -f(x)$ and find its domain and range.



4. Sketch the graph of $y = f(-x)$ and find its domain and range.

